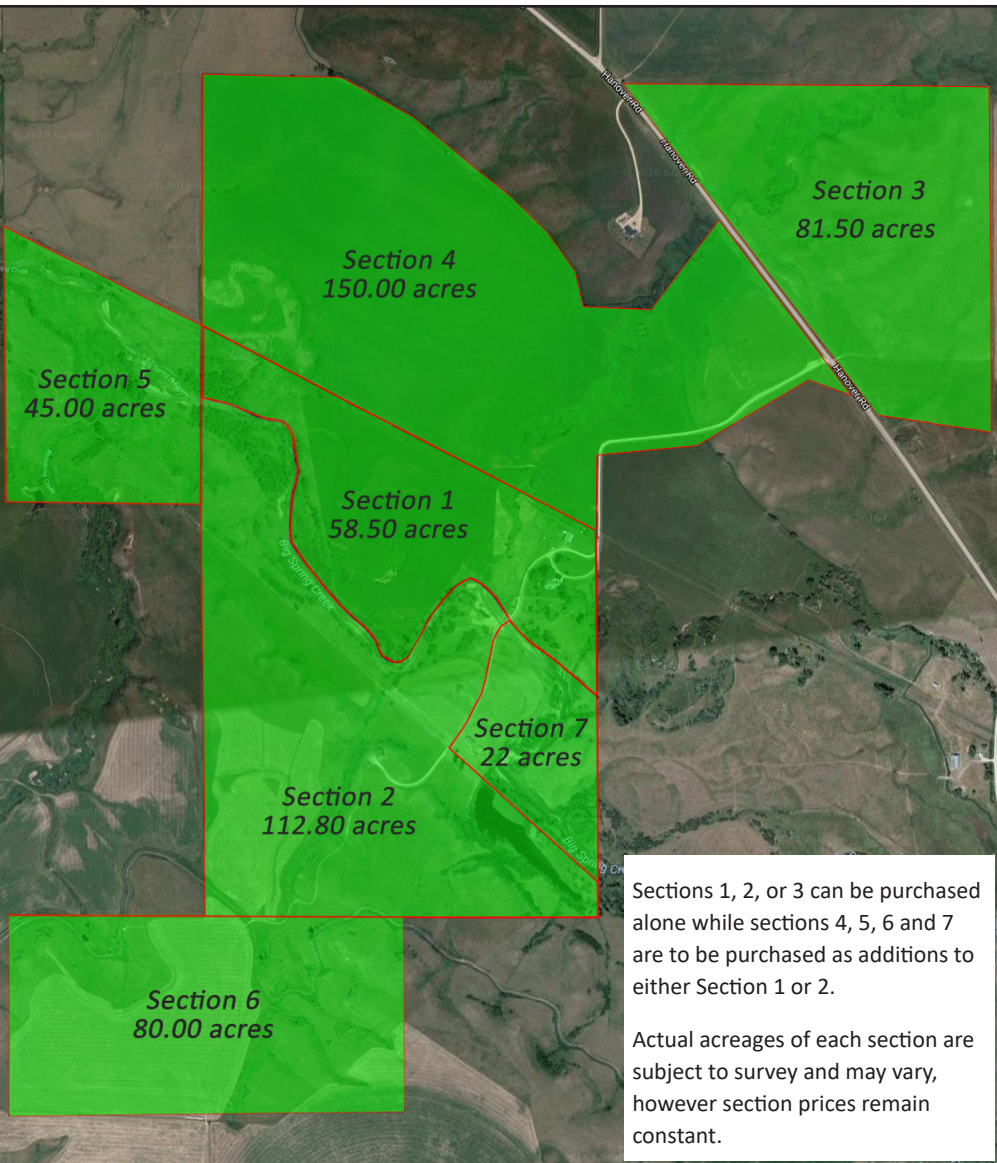


## Pricing options



Section 1 . . . . . \$1,150,000  
Includes, 58 acres with the main house-approximately 4,000 sq ft, 3 car garage, original corrals and sheds, sub-irrigated hayland of approx 25 acres, and over a mile of frontage on the north side of Big Spring Creek.

Section 2 . . . . . \$1,000,000  
Includes, 112 acres, the log fishing lodge, habitat, plus excellent ag land, including almost a mile of river frontage on the south side of Big Spring Creek.

Section 3 . . . . . \$407,500  
Lies on the north side of the Hanover Highway with a great deal of habitat plus live spring water. The balance is in excellent ag land, approximately 81.5 acres. A really nice homesite parcel.

Section 4 . . . . . \$750,000  
Contains most of the irrigated hay land with live water, habitat for game and great building sites. Exceptionally productive, approximately 150 acres.

Section 5 . . . . . \$250,000  
Lies on the western boundary with unparalleled fishing and habitat, approximately 45 acres.

Section 6 . . . . . \$250,000  
Lies on the southern boundary w/ hay land and good ag land, approximately 80 acres.

Section 7 . . . . . \$210,000  
Lies just on the south side of Big Spring Creek including the horse barn, surrounding pasture and round pen.

7 Parcels Combined . . . . . \$3,950,000

Sections 1, 2, or 3 can be purchased alone while sections 4, 5, 6 and 7 are to be purchased as additions to either Section 1 or 2.  
Actual acreages of each section are subject to survey and may vary, however section prices remain constant.